

## Han A Hood Coupler Thermoplastic M20

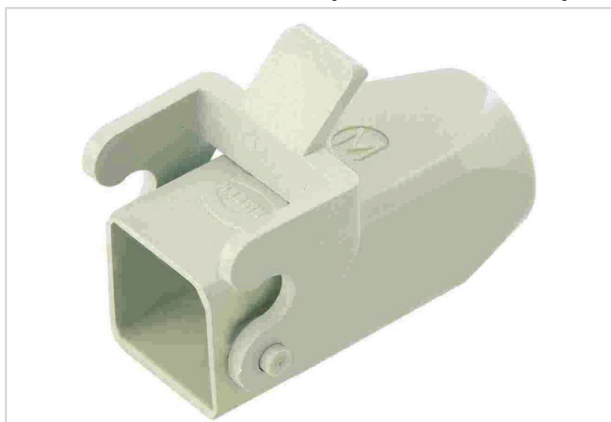


Image is for illustration purposes only. Please refer to product description.

Part number	19 20 003 0720
Specification	Han A Hood Coupler Thermoplastic M20
HARTING eCatalogue	<a href="https://b2b.harting.com/19200030720">https://b2b.harting.com/19200030720</a>

### Identification

Category	Hoods/Housings
Series of hoods/housings	Han A <sup>®</sup>
Type of hood/housing	Cable to cable housing

### Version

Size	3 A
Version	Top entry
Cable entry	1x M20
Locking type	Single locking lever
Field of application	Standard Hoods/housings for industrial applications

### Technical characteristics

Limiting temperature	-40 ... +125 °C
Note on the limiting temperature	For use as a connector according to IEC 61984.
Degree of protection acc. to IEC 60529	IP44 IP65 / IP67 with seal screw 09 20 000 9918
Type rating acc. to UL 50 / UL 50E	4 4X 12

### Material properties

Material (hood/housing)	Polycarbonate (PC)
Colour (hood/housing)	RAL 7032 (pebble grey)
Material flammability class acc. to UL 94	V-0



Pushing Performance  
Since 1945

## Material properties

RoHS	compliant
ELV status	compliant
China RoHS	e
REACH Annex XVII substances	Not contained
REACH ANNEX XIV substances	Not contained
REACH SVHC substances	Not contained
Fire protection on railway vehicles	EN 45545-2 (2020-08)
Requirement set with Hazard Levels	R1 (HL 1-3) R7 (HL 1-3)

## Specifications and approvals

Approvals	DNV GL
UL / CSA	UL 1977 ECBT2.E235076 CSA-C22.2 No. 182.3 ECBT8.E235076
CE	Yes

## Commercial data

Packaging size	10
Net weight	16 g
Country of origin	Romania
European customs tariff number	85389099
GTIN	5713140124486
eCl@ss	27440202 Shell for industrial connectors